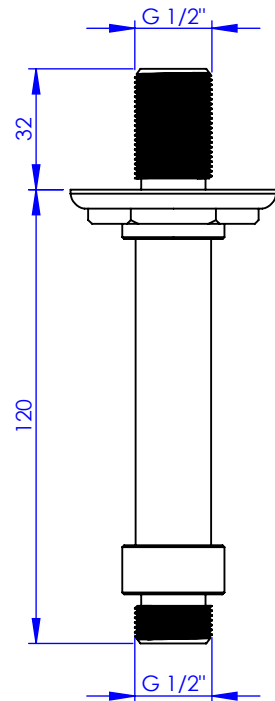
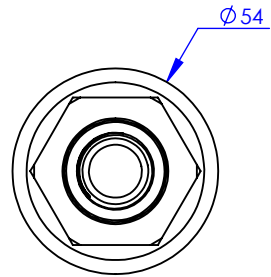


Collection : Industry

Bras de douche vertical 120 mm

Vertical shower arm 120mm

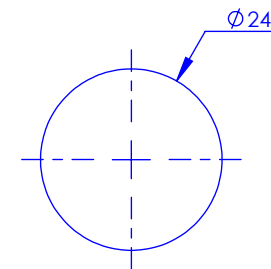


Ref : M81-2C120



Débit / Flow rate : ...l/min sous 3 bars.
Pression maxi / max pressure : 5 bars.

Ø de perçage et entra-axe recommandés.
Ø Recommended drilling and centre distances.



MARGOT

PARIS . 1912

06/10/2021 -1