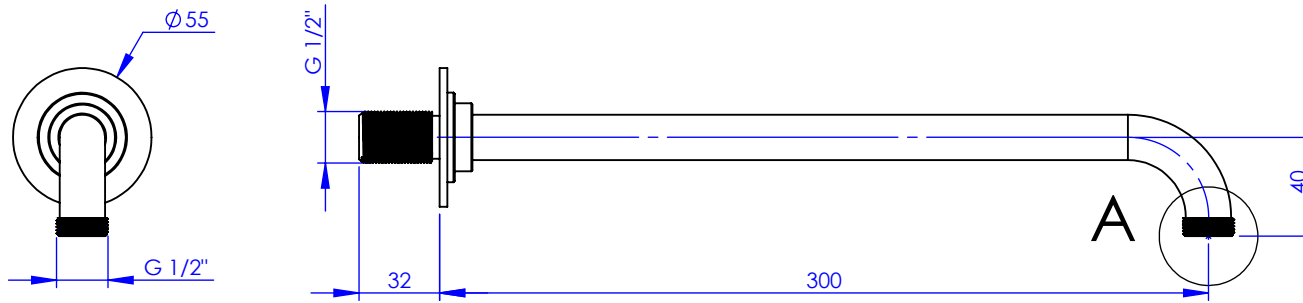
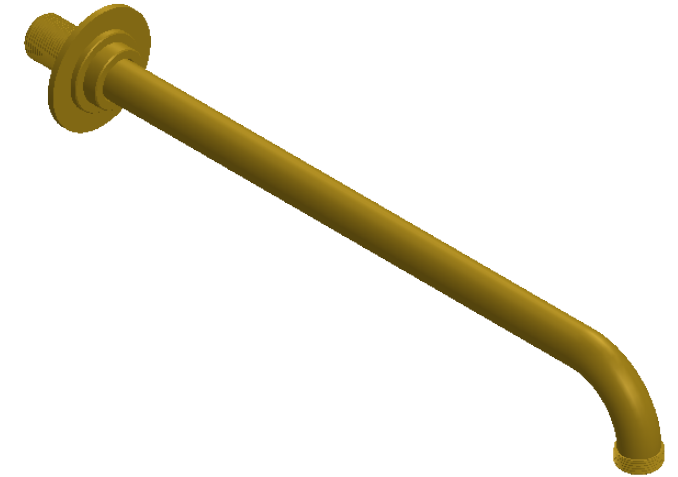


Collection : Westminster

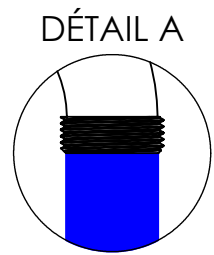
Bras de douche mural 300mm, 90°

Wall mounted shower arm 300 mm length, 90°

Ref : M38-2W301

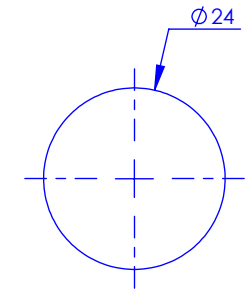


A



Débit / Flow rate : ...l/min sous 3 bars.
Pression maxi / max pressure : 5 bars.

Ø de perçage et entra-axe recommandés.
Ø Recommended drilling and centre distances.



MARGOT

PARIS . 1912

21/05/2021 -1